

How can YOU get involved with Big Local SW11?



What is the Big Local SW11 Vision?

Big Local SW11 is a National Lottery funded opportunity to use £1m over 10 years to make a lasting, positive difference to our community.

Between 2012 and 2014 8 SW11-based events provided more than 2,000 local residents and workers with fun opportunities to discuss improvements they would like to make to our local community and environment.

Your feedback enabled Big Local SW11 to prioritise our long-term vision around four focus areas:

1. Achieving and Potential
2. Safety and Wellbeing
3. Influence and Ownership
4. Community and Belonging

Big Local SW11 is committed to working in partnership with you to make sustainable, long-term improvements in each of these areas over the next 10 years and looks forward to your support in developing more detailed plans for each category.



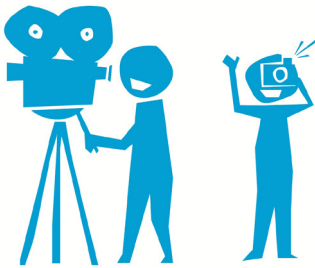
What Big Local SW11 grants are available and awarded to support our vision?

Big Local SW11 has £10,000 to award. Details on our award criteria, how and when to apply can be found on our website:

<http://www.biglocalsw11.co.uk/have-your-say/smallgrants/> or please call: 0207 228 0433

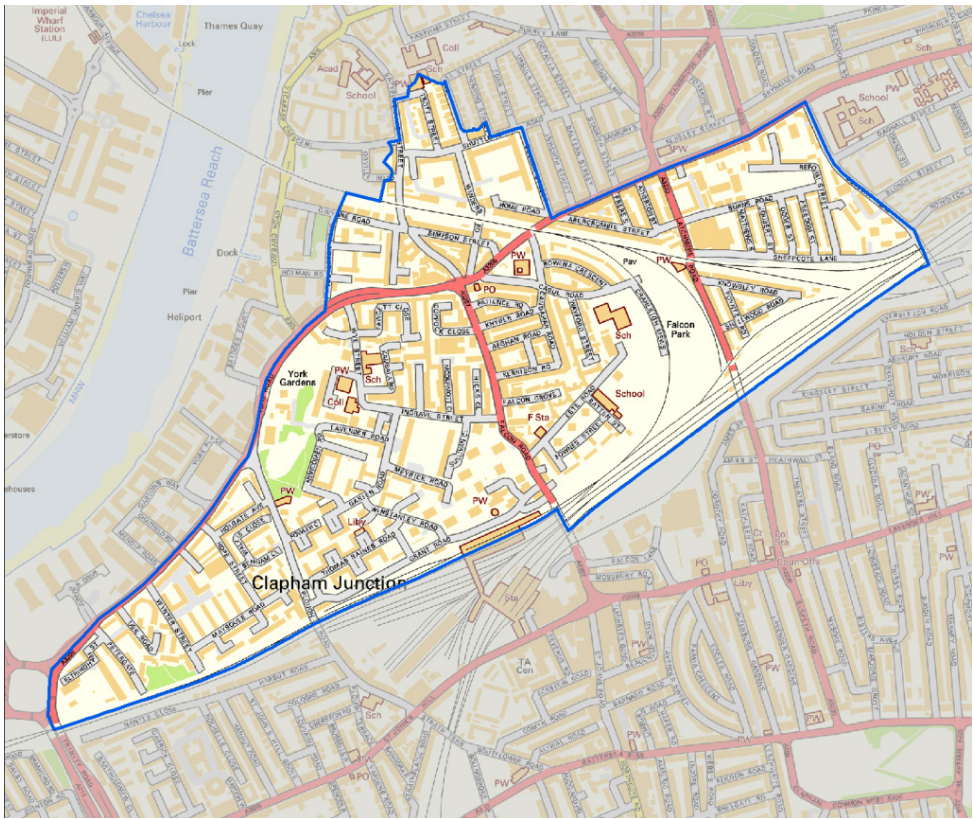
Big Local SW11 has awarded **£9,500** in **Small Grant Awards**:

- **£1,000** to Battersea High Street Residents Association for the start of a project of a seat, planter and bronze plaque
- **£1,000** to Creative Arts School to support young children otherwise unable to enjoy opportunities provided by Stagecoach or Italia Conti
- **£1,000** for local group therapy sessions
- **£900** for equipment to support Battersea Mum's Fitness activities
- **£610** for Providence House Youth Club to enable after school care
- **£550** to Lightbox theatre to transform the Battersea Odyssey show into a professional video



Where is Big Local SW11?

SW11 Latchmere ward The Big Local SW11 area consists of a group of contiguous council estates lying to the north of Clapham Junction station:



What Big Local SW11 activities are planned to support our vision?

Please contact the representatives listed if you are interested in learning more and supporting any of the initiatives listed.

1. **Achieving & Potential** – We are developing a skill sharing club and structured mentoring programmes; Helen Taylor?
2. **Safety & Wellbeing** – We are piloting a programme of indoor and outdoor activities focused on different age groups; Darren?
3. **Influence & Ownership** – We are lobbying for improvements to the railway tunnel, are involved with the ongoing regeneration work, and improving messaging to encourage dog owners to clean up after their pets; xxx
4. **Community & Wellbeing** – We are coordinating a wide range of intergenerational activities, including the recording of stories of our area; xxx



How can you get involved with Big Local SW11?

Please contact us at info@biglocalsw11.co.uk

Or visit our website: www.biglocalsw11.co.uk

And follow us on social media:

[/BigLocalSW11](https://twitter.com/BigLocalSW11) [/BigLocalForSW11](https://facebook.com/BigLocalForSW11)



Big Local SW11 Journey to £1 million

Your opportunity to make a lasting, positive difference to your community

