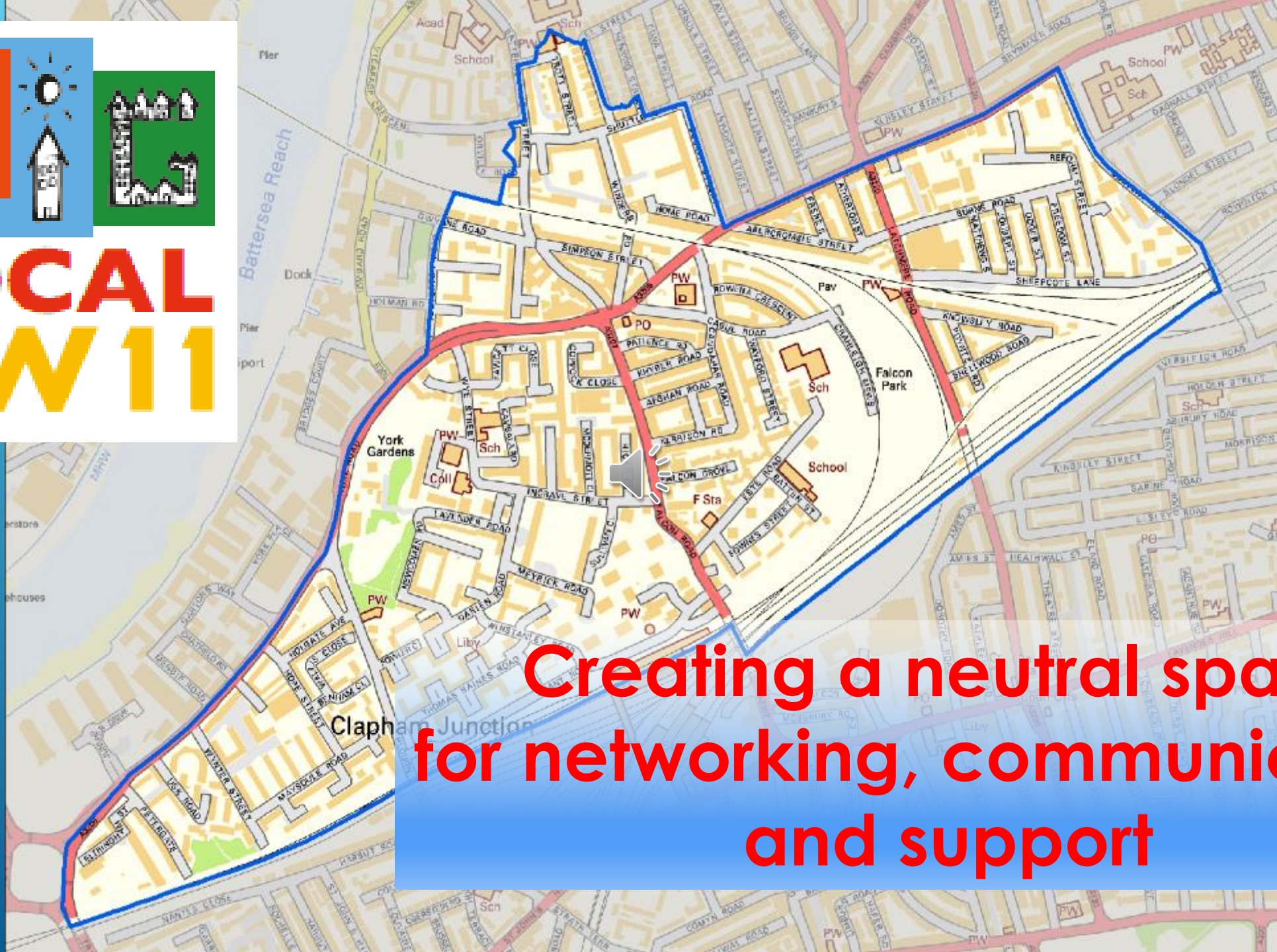




LOCAL SW11



**Creating a neutral space
for networking, communication
and support**

Funding change through local people and organisations



**LOCAL
SW11**

Turning the vision into action

A photograph of a city street scene. In the background, there are several tall, multi-story apartment buildings. A street lamp is visible on the right side of the frame. The sky is overcast. The foreground shows a street with a crosswalk and a few people walking.

**“As residents and workers in SW11,
we have a long term vision of
our community as a place where.....**

Achieving & Potential



Everyone has the opportunity and confidence to widen their horizons and to maximise their potential for learning, working and achieving.

Safety and wellbeing



***Everyone feels safe
and that they belong***

Influence & ownership



***Everyone can have a voice,
shape their future and
influence the design of space and
services
in a way that develops ownership***

Community & belonging

***We all have the opportunity
to meet and interact
across the wider community,
to learn and belong***



BLSW11 has travelled....

**From June 2012
Initial Visioning event at York Gardens**

**£1 million
Over 10 Years**



LOTTERY FUNDED

**To submission of The Plan to Local Trust
November 2014**





Core Planning & Stakeholder Consultative Groups formed

Talking, Consultation & Committees

***Getting Started Application and
Providence House appointed Local Trusted Organisation***



***Website launched at
Christmas***



Newsletters and Questionnaires

Quick Wins Grants supporting inter-generational activities, local sports and activity groups summer 2013

- ▶ ***Summer Event in York Gardens June 2013***
- ▶ ***Focus Groups Autumn 2013***



Pathway Funding Grant of £20,000
for Support Worker Costs, Small Grants,
Building a Strong Partnership, Developing the Plan

Drawing up the BLSW11 Vision & Values

**BLSW11 Partnership Executive Committee appointed
June 2014**

Small Grants Round 2 awarded for local ventures

**Including film about the local area, Battersea Stories project, women's
fitness, skateboarding for young people**

Launch Event at York Gardens June 2014

BLSW11 PLAN SUBMITTED NOVEMBER 2014

2015





JANUARY TO MARCH 2015

- Recruiting a Support Worker to help Deliver the Plan
- Publicise and Award Small Grants Programme 2015
- ❖ Partnership Exec scoping projects to begin Spring/Summer 2015
- ❖ General Members public Meeting February 2015

FROM APRIL 2015 > *THE FIRST 6 MONTHS*



Support Small Grant Projects

Sheltered housing intergenerational events

Support community fitness programmes

- Annual BLSW11 Community Event at York Gardens





FROM SEPTEMBER 2015 > *THE SECOND 6 MONTHS*

Develop a network of 'community connectors' for 2 way information sharing

Begin to lobby for improvements to the railway tunnel

Develop a skill development and sharing club

Develop a mentoring service for young people

- ❑ Pilot a programme of outdoor activities across the BLSW11 area for young people



FROM 2016 > *THE SECOND YEAR*

Support the gathering and telling of local stories

Lobby for improvements to local outdoor spaces

Develop a programme of participation for carers and disabled

Work with partners to deliver a local art show

□ Organise London based trips for all ages

□ **FALCON ROAD FESTIVAL Summer 2016**



MORE PROJECTS FOR 2016

Support a partner to deliver more after school and homework clubs

Fund structured programmes for young people

- BLSW11 Consultation for the Next 2 Years
- Small Grants 2016

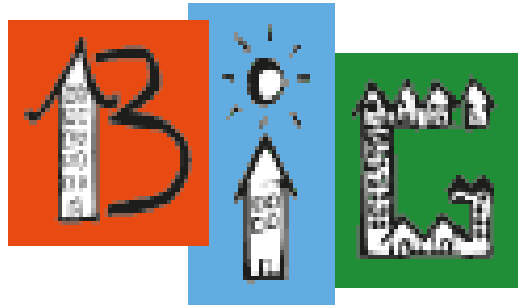
“BLSW11 is here to create the opportunity to meet, build a sense of community, and support one another. This Aspiration is good but opportunity is better and both together make the difference.”

Councillor Tessa Strickland, BLSW11 Vice Chair.



“BigLocalSW11 presents a real opportunity to create and develop something of lasting value in this community. It is an opportunity to do it together. It is also a chance to listen. Everything that is worthwhile in this world is done through hope.”

Robert Musgrave MBE, Chair BLSW11



LOCAL
SW11

From the initial launch of Big Local SW11 in June 2012 through to the submission of our Plan to the Local Trust in November 2014, this has been a fascinating journey.

The networking with different organisations and local residents has been amazing, and some of our events have been great community gatherings, underlining what a special place BLSW11 is.

We have been able to fund over a dozen small projects on the way, and now this year the first drop down from the £1 million will be ready to finance the first projects of the Plan.

**This is the beginning of a 10 year
project**

**Now is the time for you to be more
involved**



**Join us at our next meeting on Monday February 9th
Or contact us at
Or visit our website: www.biglocalsw11.co.uk**